

S 4 4

足場打損穴 Δ 3

\sim 66.3

Δ 140

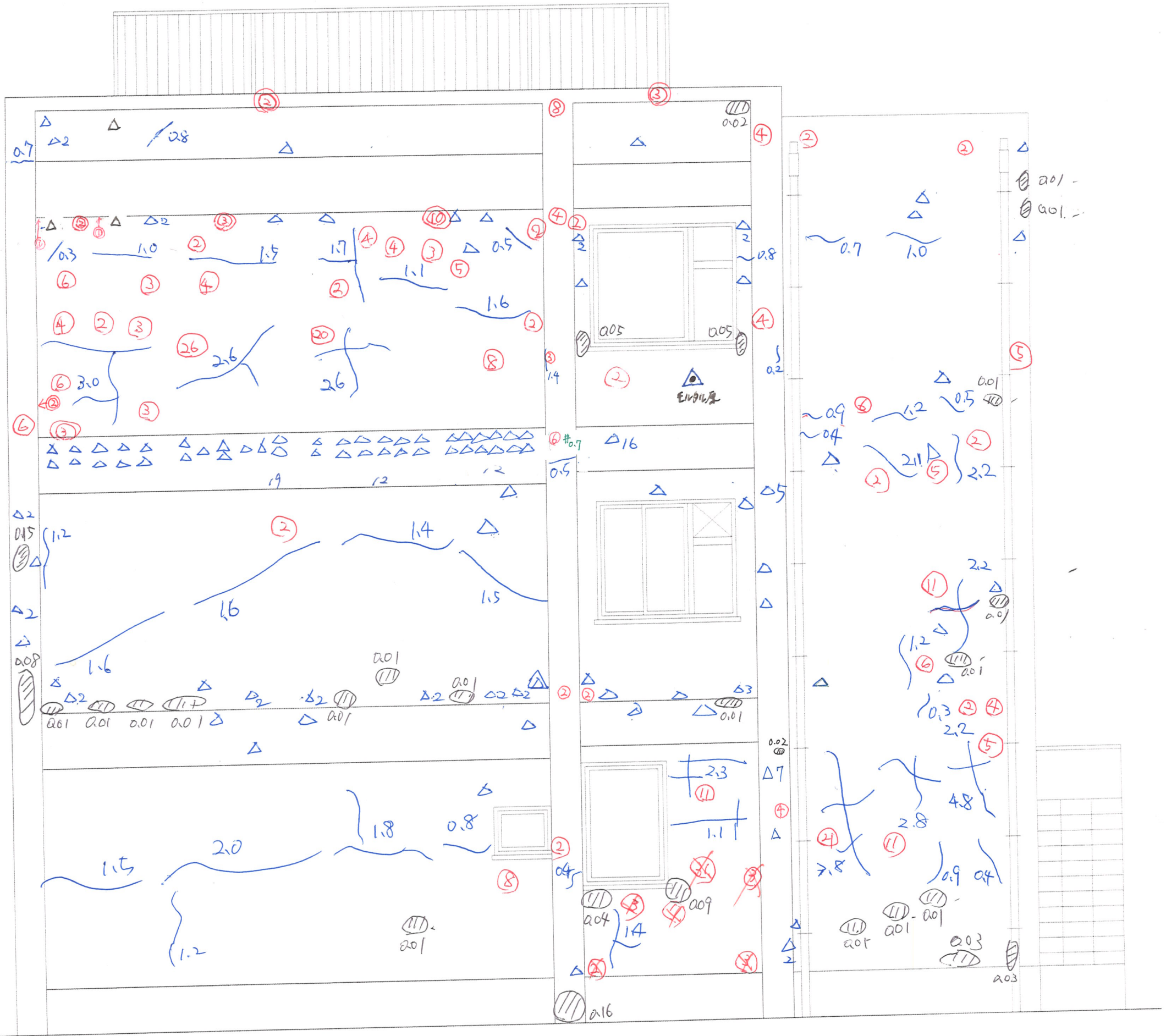
Δ 4-3

0.7

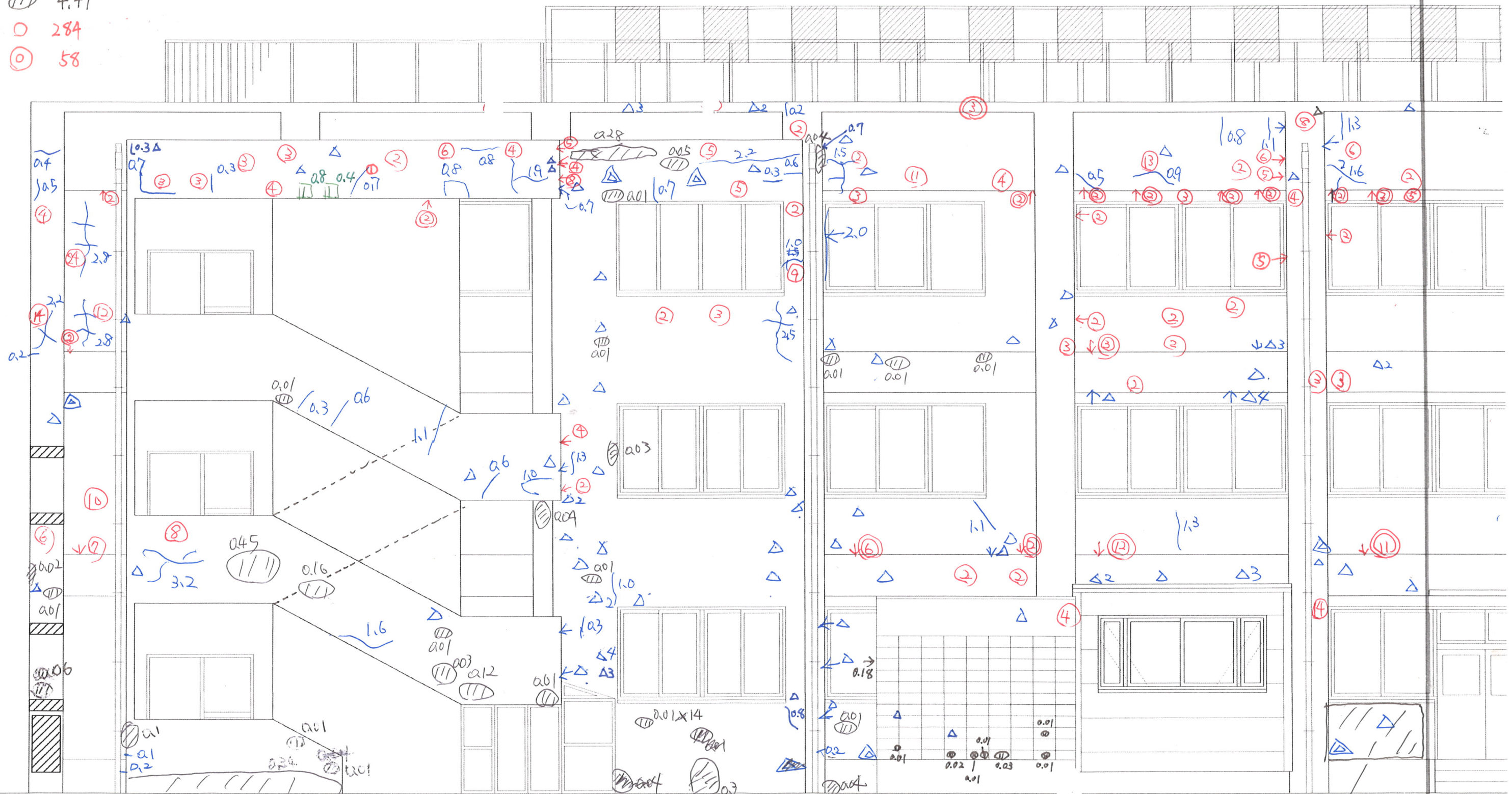
$\textcircled{///}$ 0.87 10.01+0.02

$\textcircled{\circ}$ 311

$\textcircled{\circ}$ 27



⑤ 58

 $\begin{array}{c} \diagup \\ \text{---} \\ \diagdown \end{array}$ 

Q 1.7

全ネジピッチ 60mm.

S 4 2

$\Delta 3$

 $\Delta / 100$ 

C

③ 1.87

9 241

116

A棟 立面図 東面-2

全ネジピン 60mm

32.1 ~ 50.1 (-1.4-3.7-0.4-1.7-1.8)-18

134 △ 152 (-3-1-1-2-2-1-8)-18

△ 3

井 0.6

6.74 ③ 6.78 -0.09

134 ○ 168 (-2-2-2-4-2)34

89 ○ 132 (-25-6-12)43

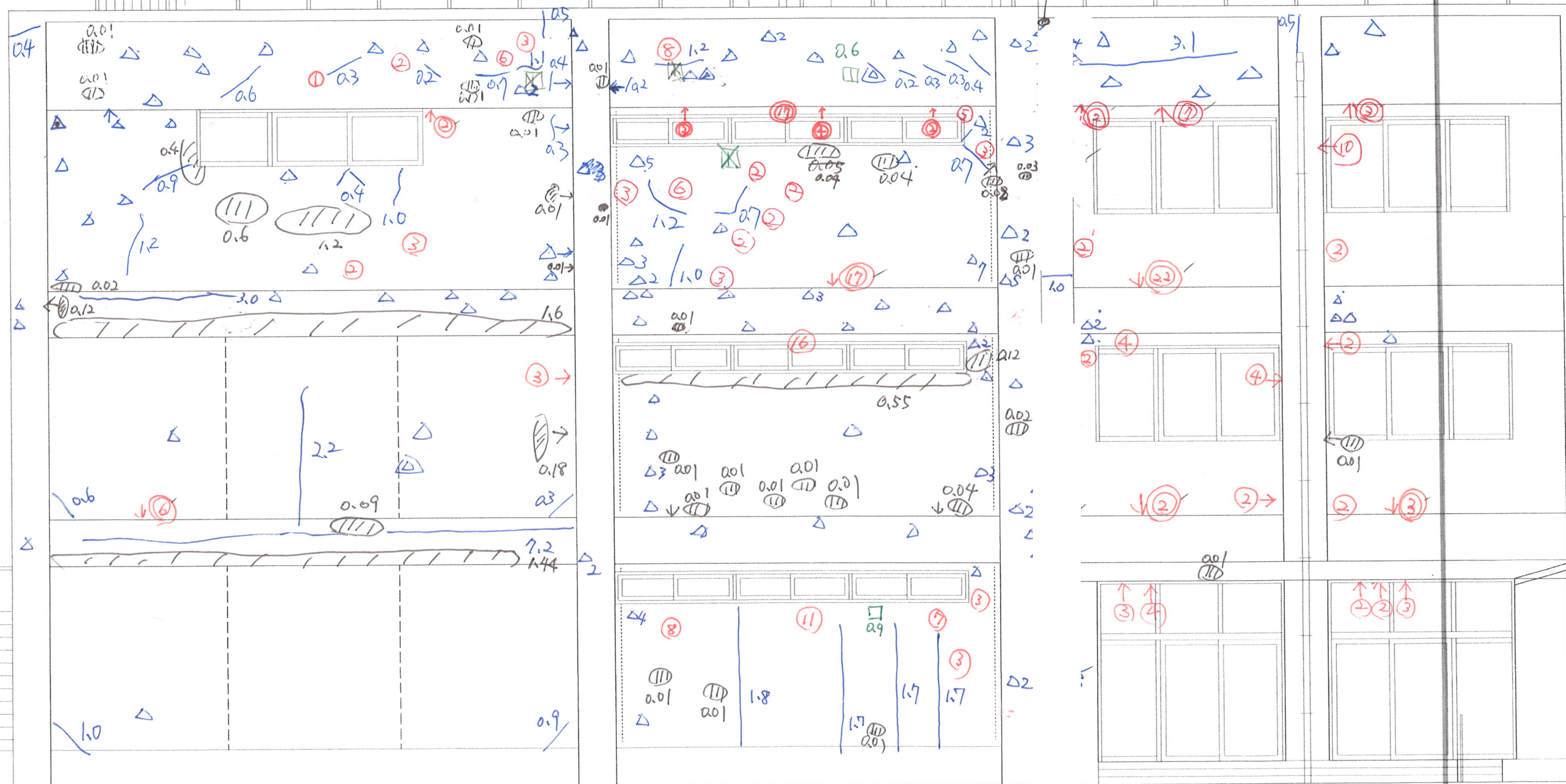
拡大図

99外部

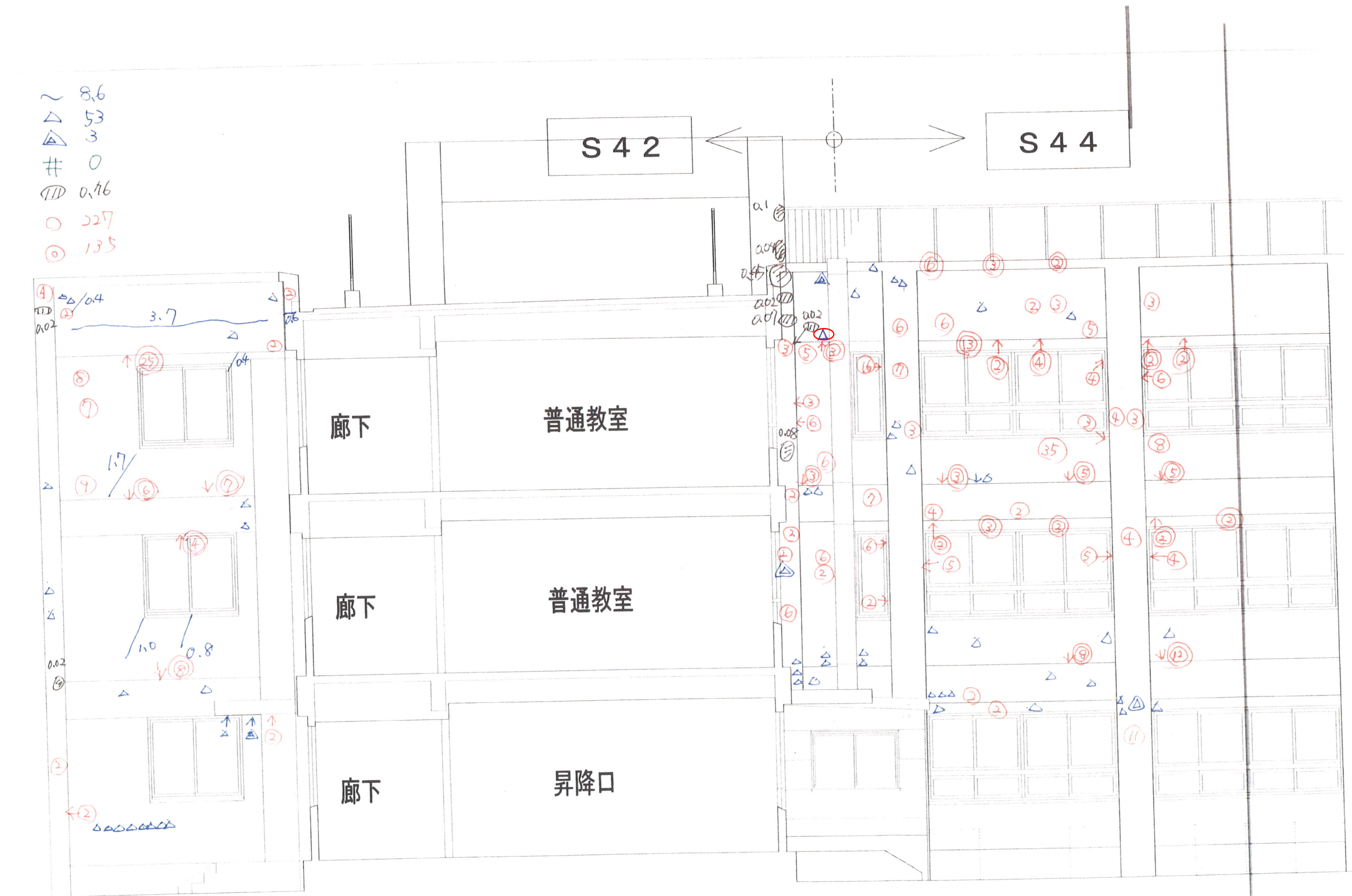
既設窓

1.7m.

アクリル注入部



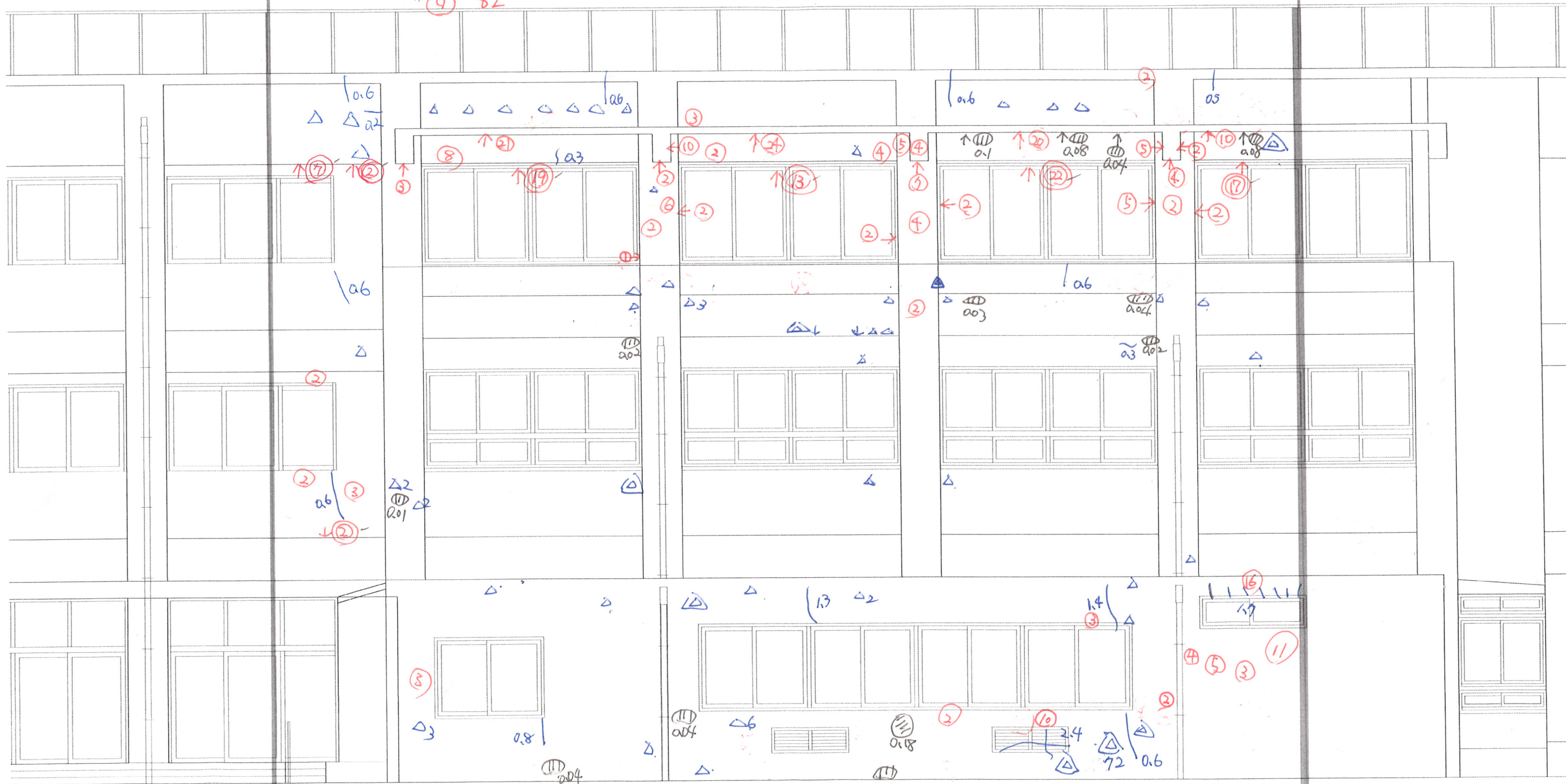
~ 8.6
 △ 53
 ▴ 3
 # 0
 ① 0.16
 ○ 227
 ⊙ 135



A棟 立面图 西面-1

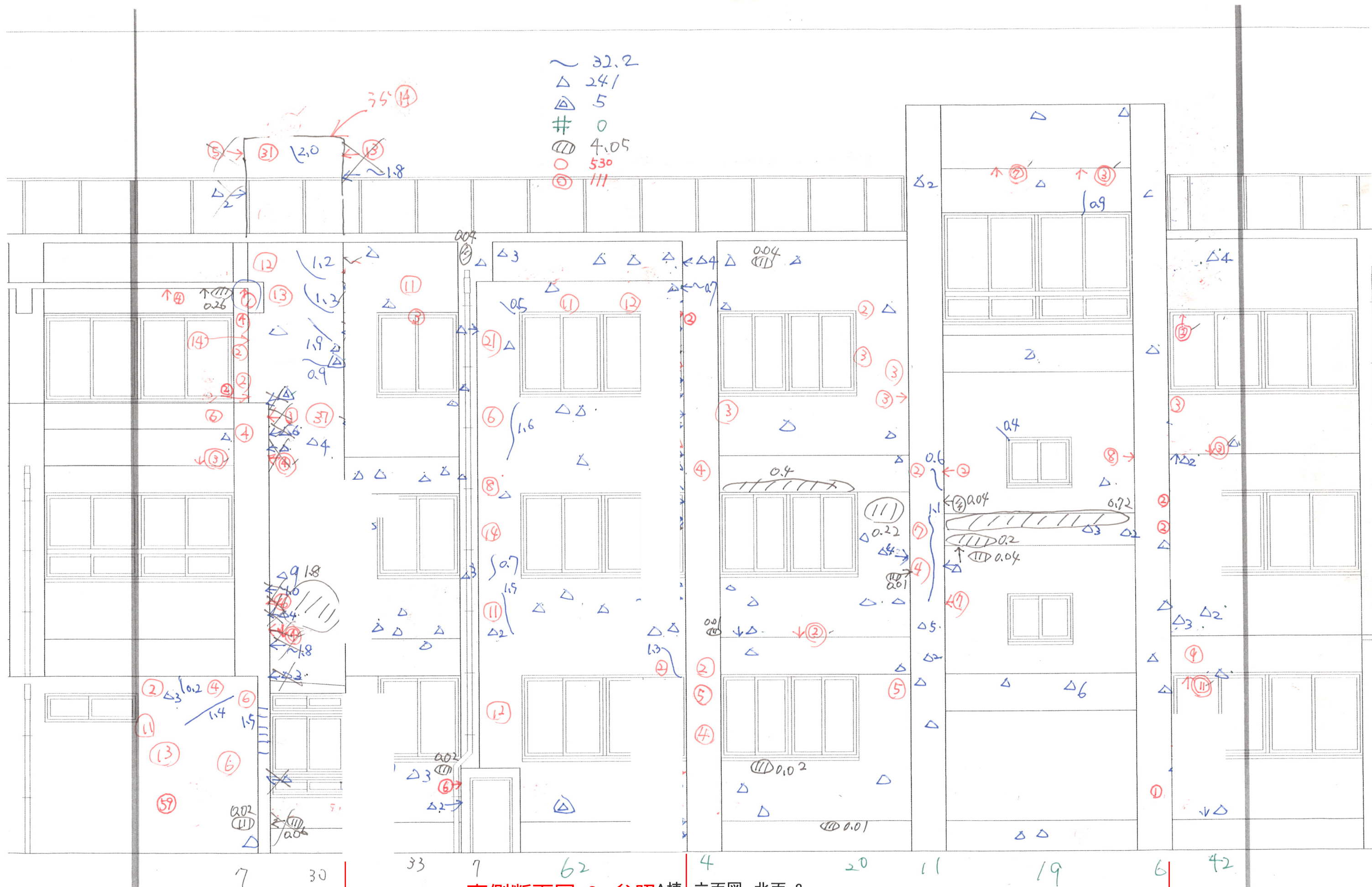
8.6
 19
 (38)
 (50)

~ 13.1
 △ 55
 △ 79
 # 0
 ⊕ 0.7
 ⊕ 283
 ⊕ 82



A棟 立面図 北面-2

7/11 棟

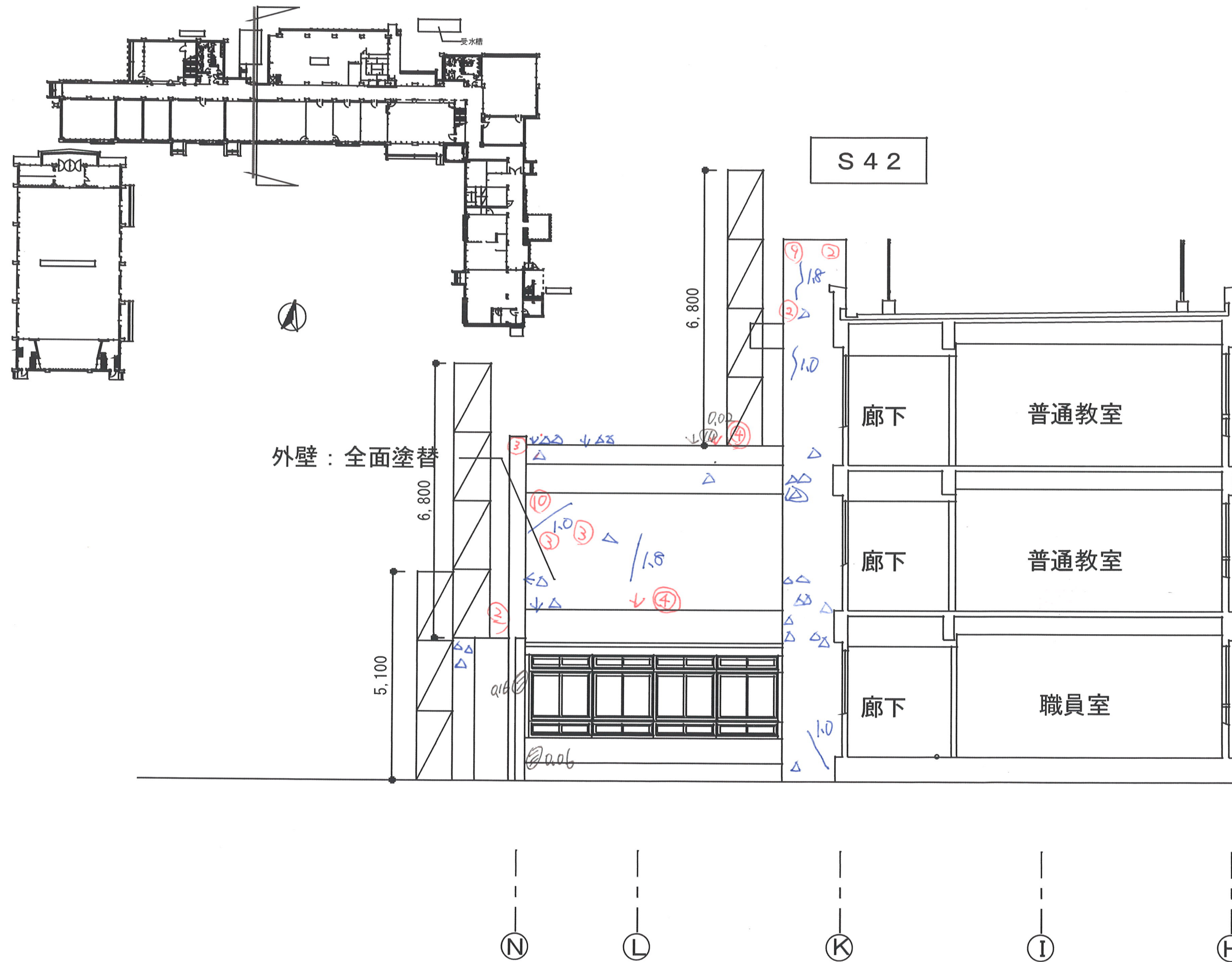


西側断面図-1 参照

西面-S42 参照

西-1

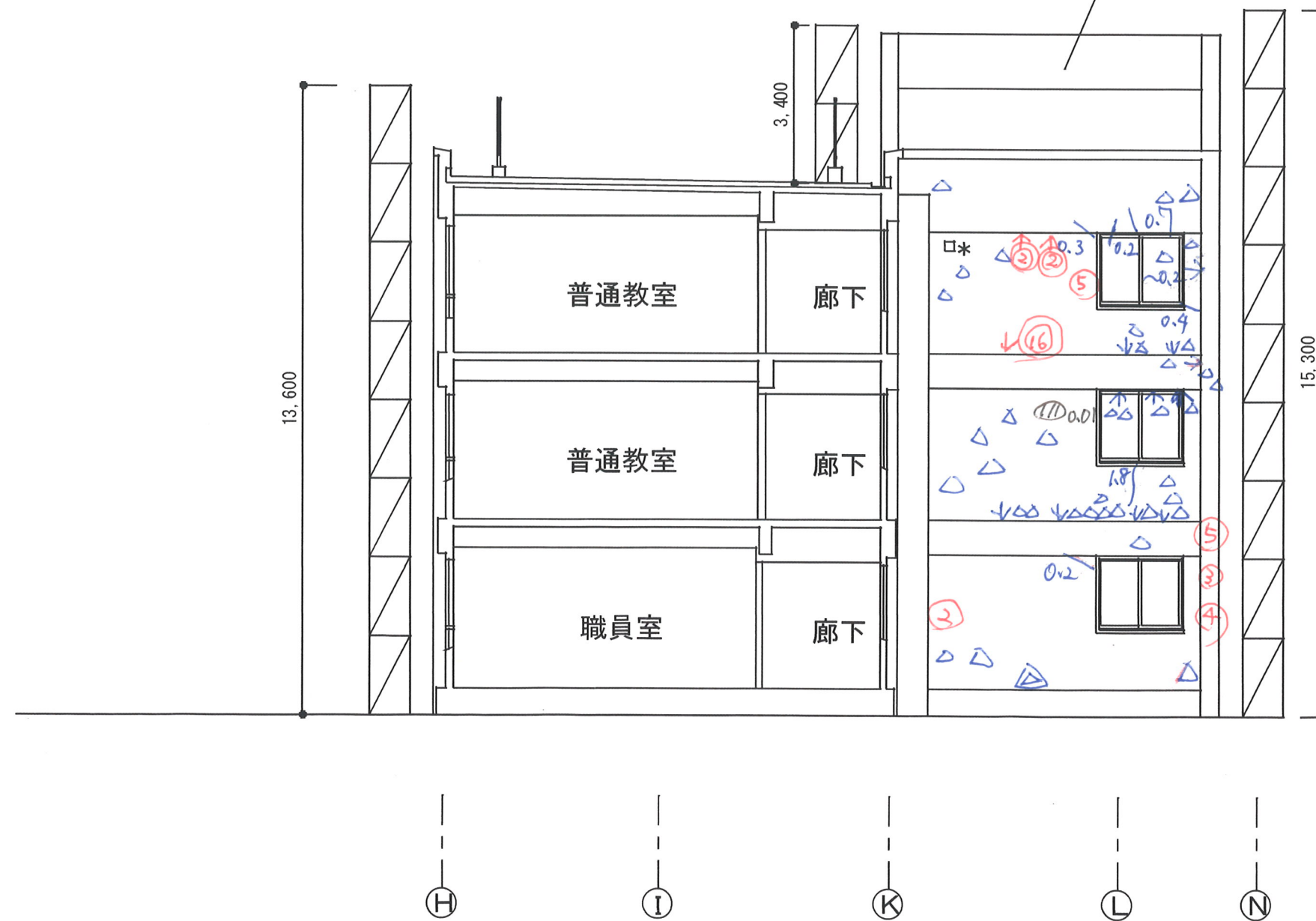
A棟（校舎）



西側断面図-1

A棟（校舎）

外壁：全面



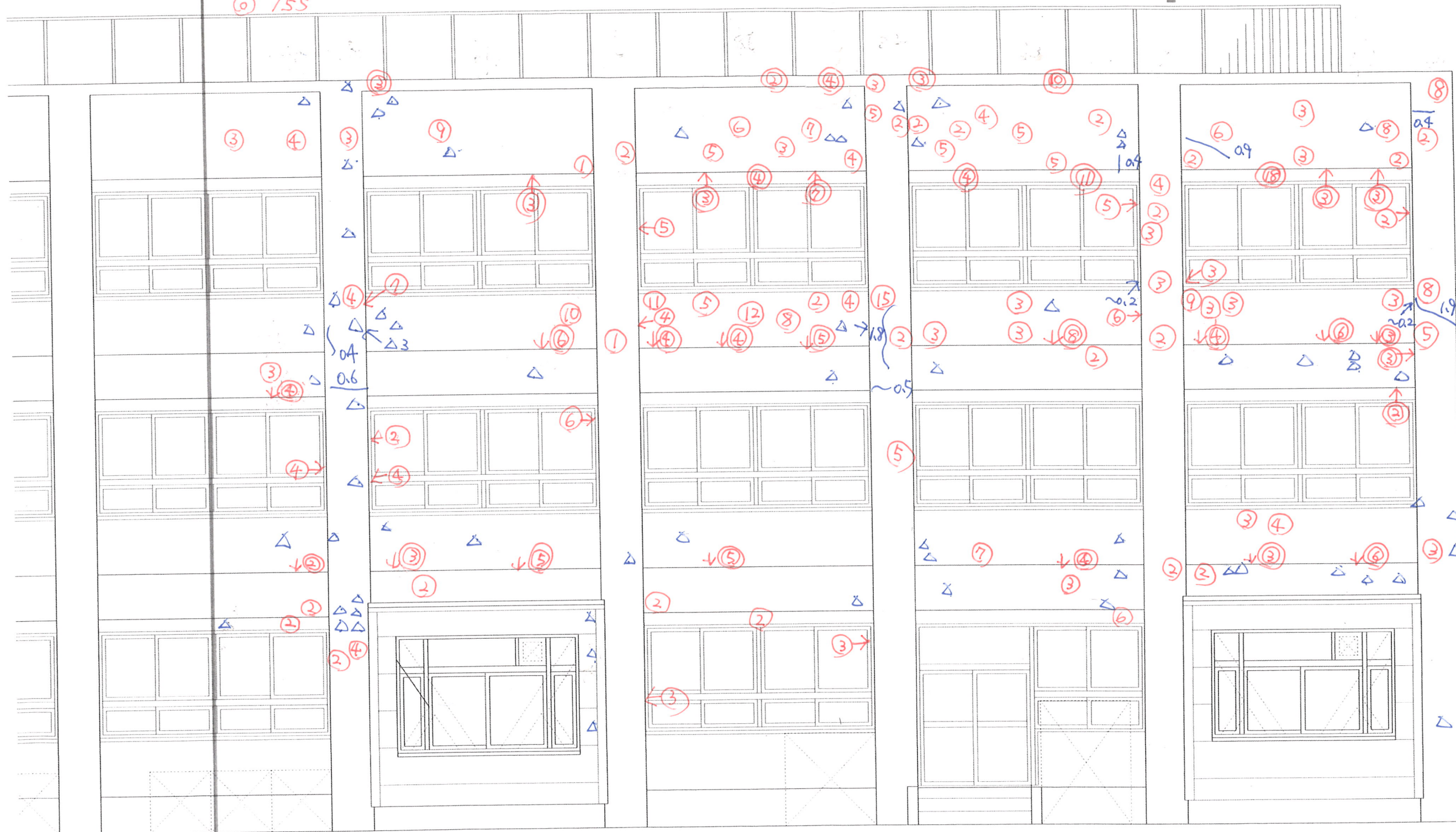
東側断面図-1
A棟（校舎）

~	7.1
△	51-1
△	1
#	0
①①	0.95
0	39
①	15



S 4 2

~ 7.3
△ 69
△ 0
0
⑪ 0
○ 351
⑥ 155

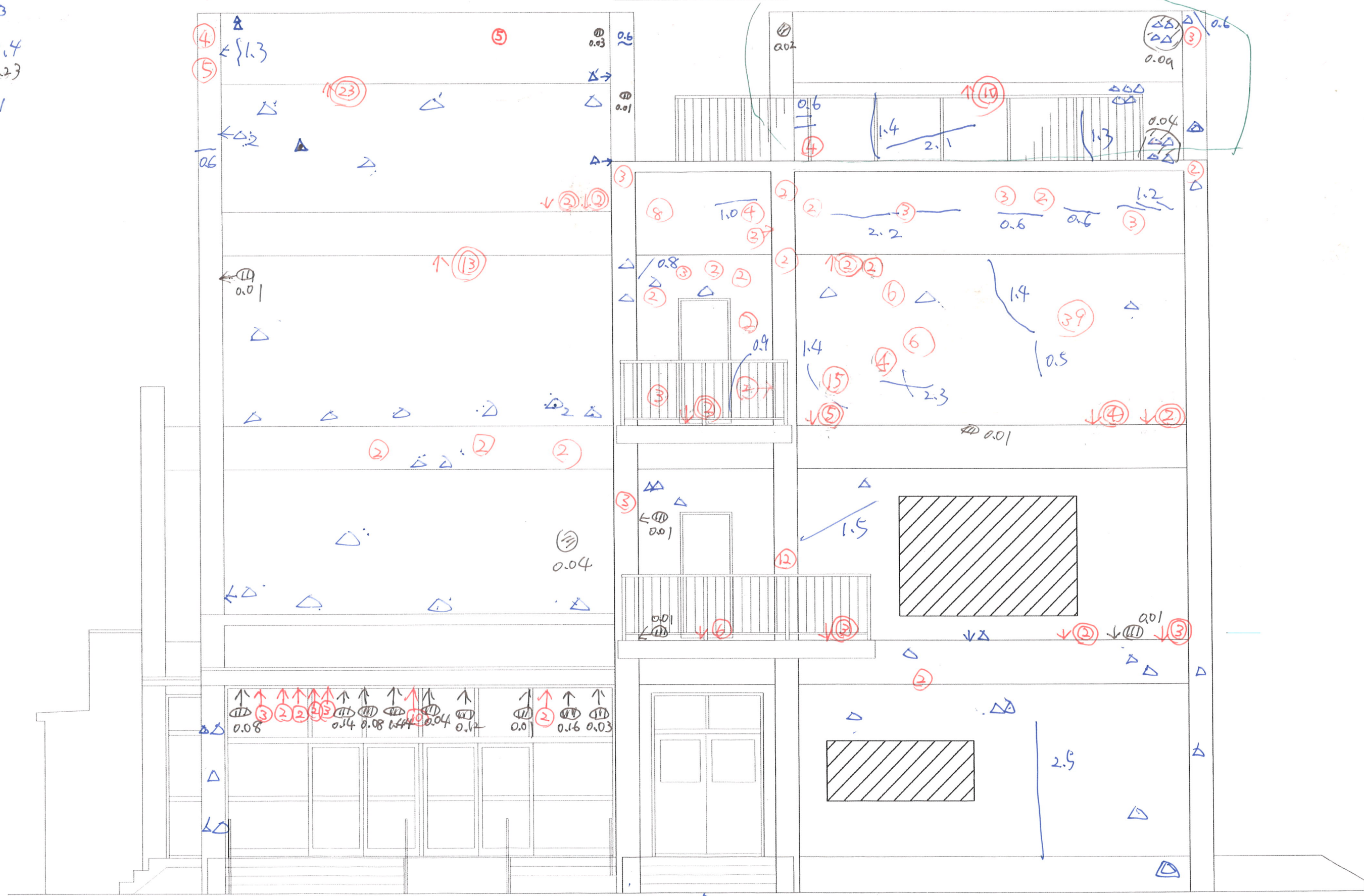


A棟 立面図 西面-2

○ 202
 ⊙ 63
 △ 53
 ~ 19.4
 ⊕ 2.23
 ⊕ 1

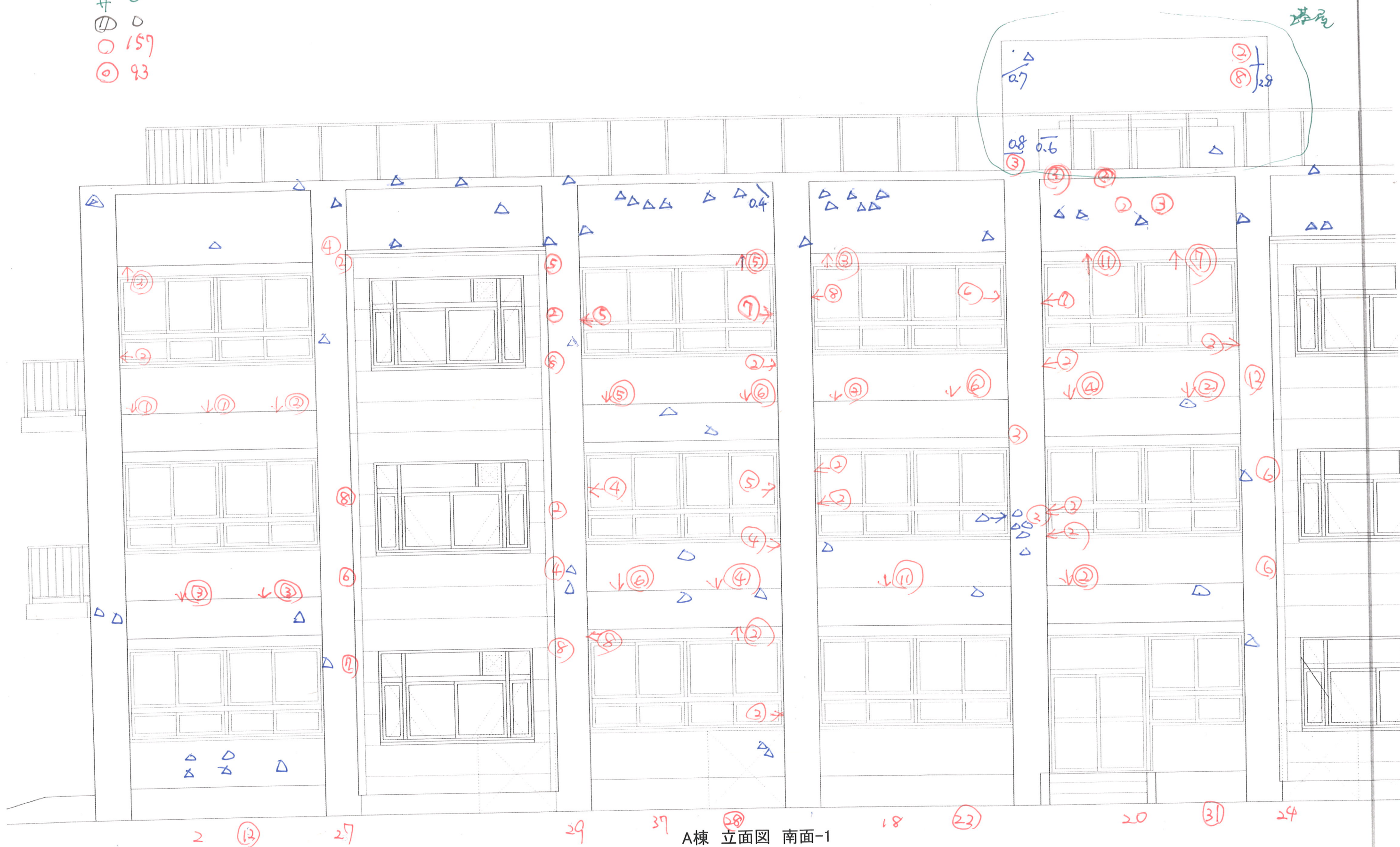
S 4 2

塔屋

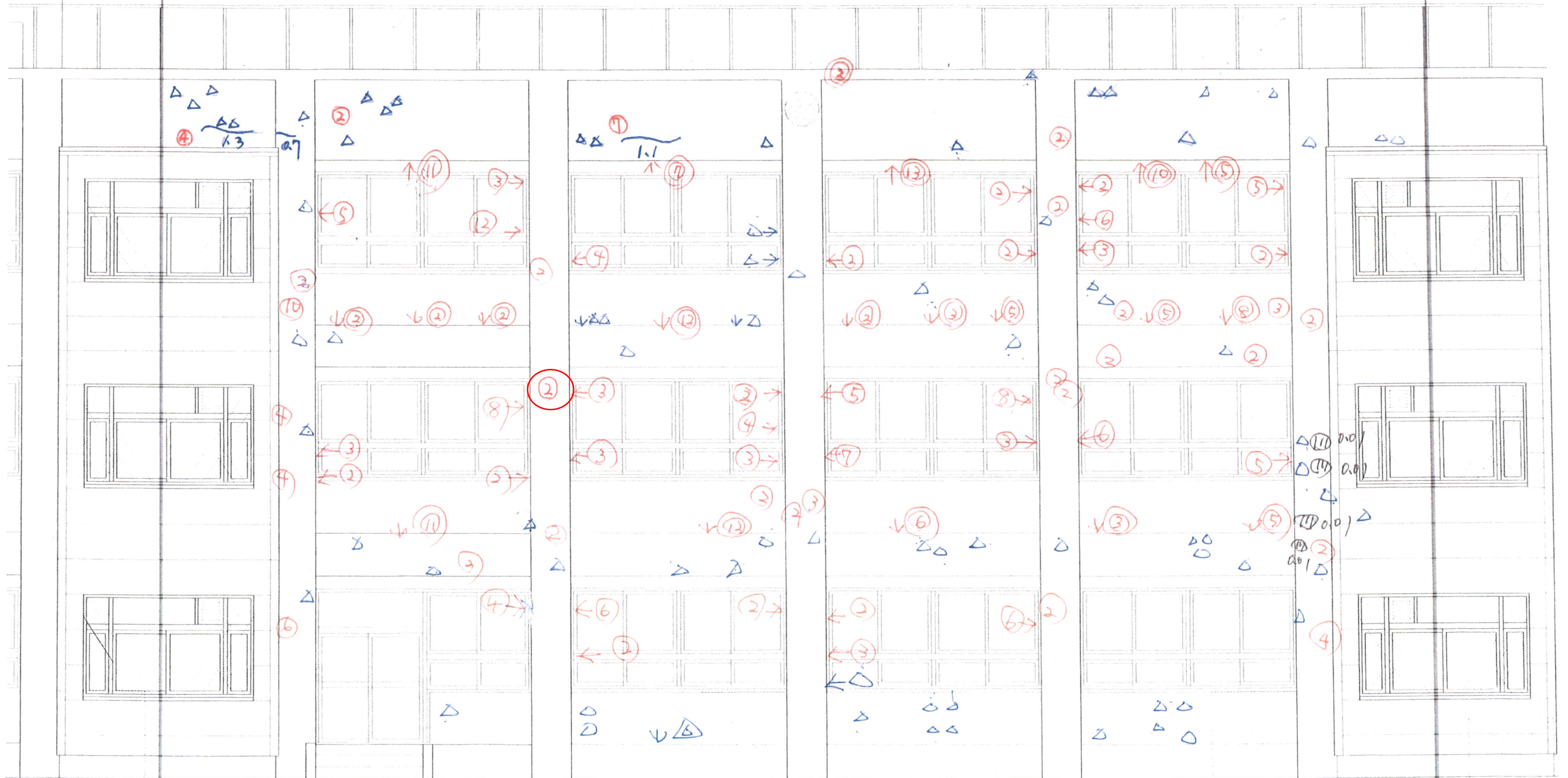


5 26 A棟 立面图 西面-S42 12 3

- ~ 0.4
- △ 63
- △ 1
- 井 0
- ① 0
- 159
- ◎ 93



~ 3.1
 △ 77
 △ 1
 # 0
 ⑦ 0.04
 ○ 216
 ○ 126

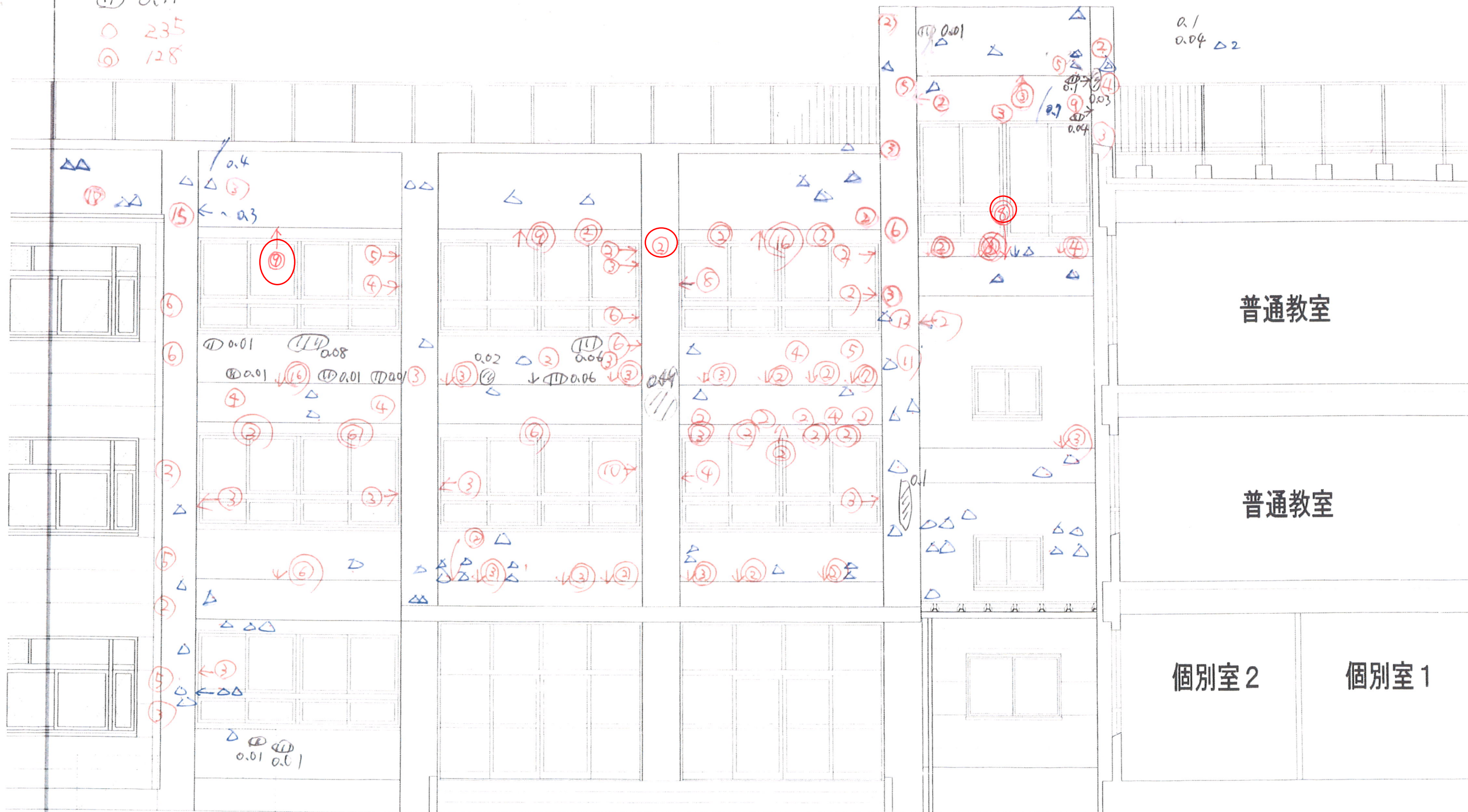


A棟 立面図 南面-2

~ 1.4
 △ 76
 △ 1
 # 0
 ⑪ 0.91
 ○ 235
 ⑥ 128

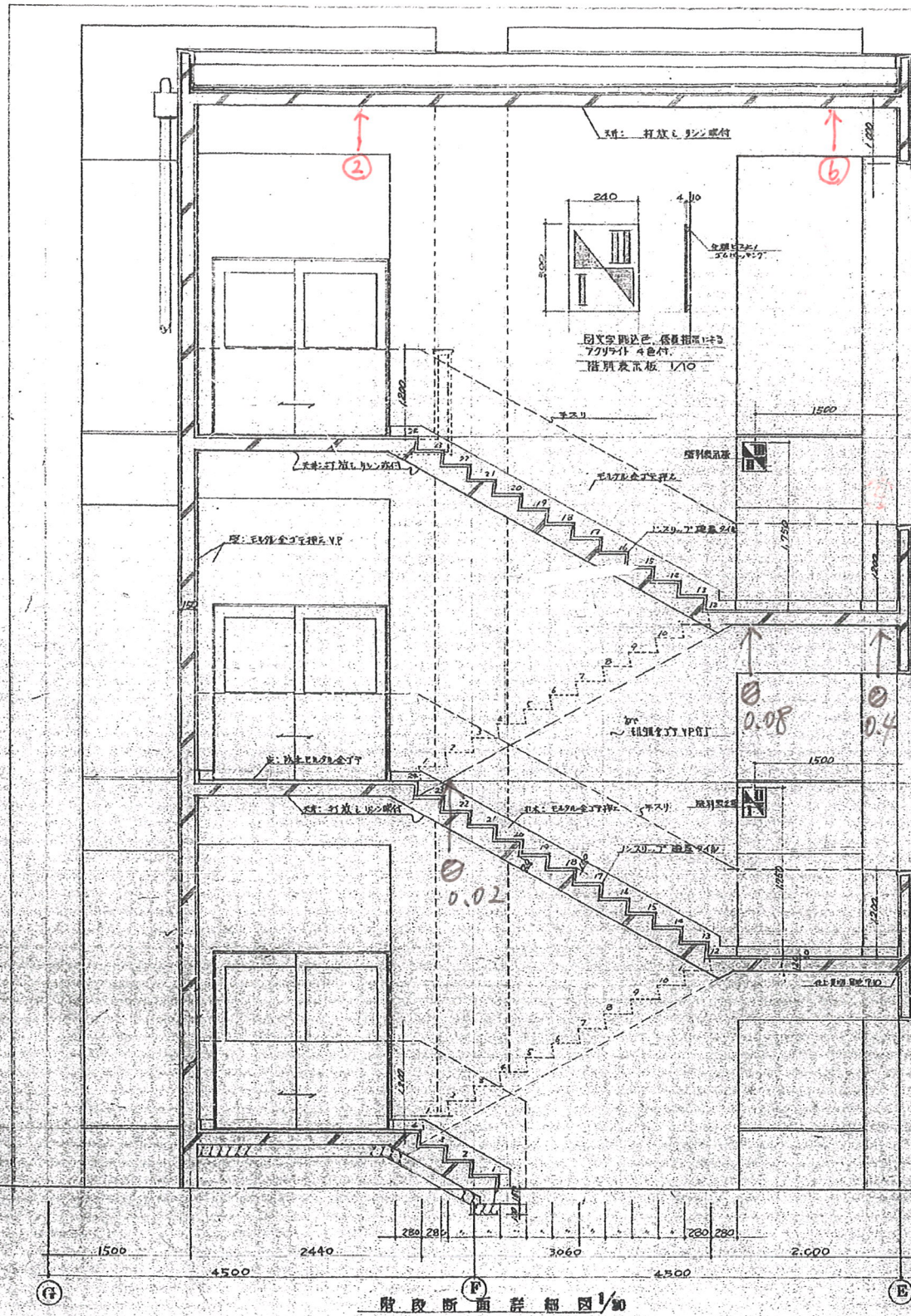
S 4 2

S 4 4



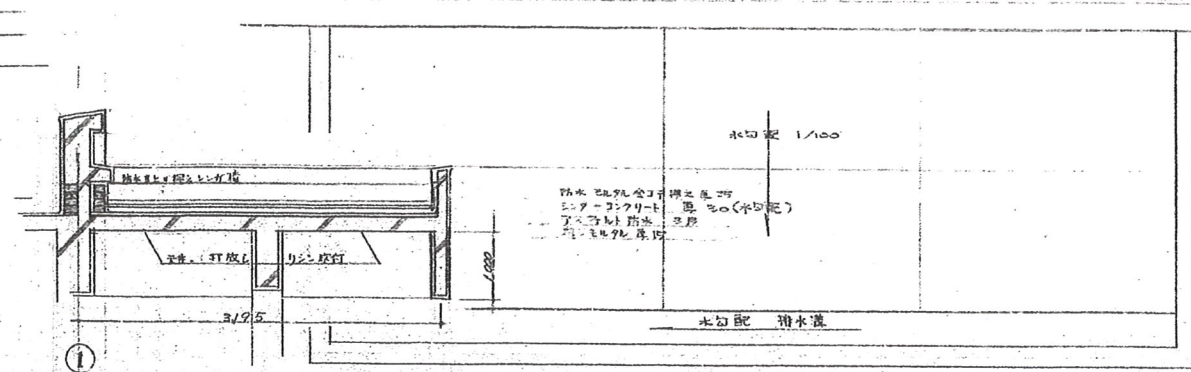
A棟 立面图 南面-3

~ 0
 △ 0
 △ 0
 # 0
 (//) 0.5
 ○ 8
 (○) 0

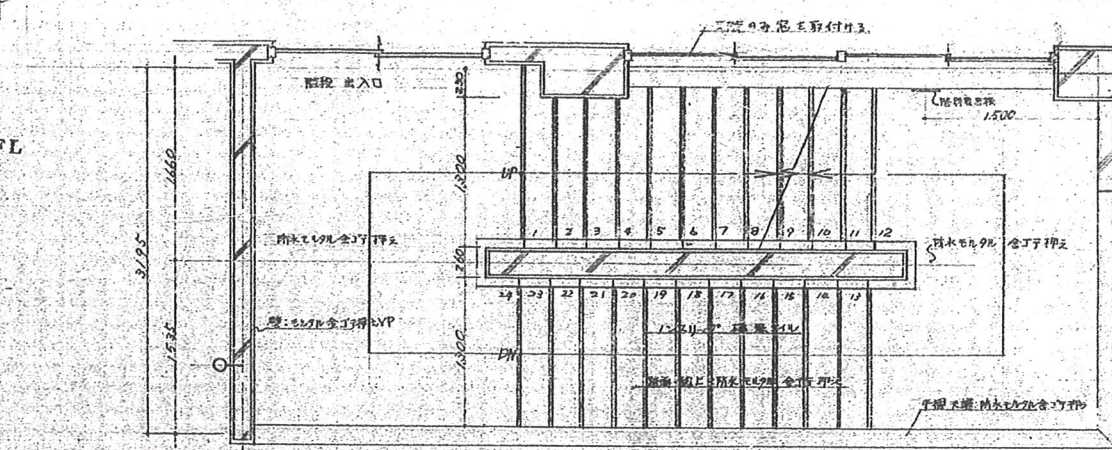


階段断面詳細図 1/30

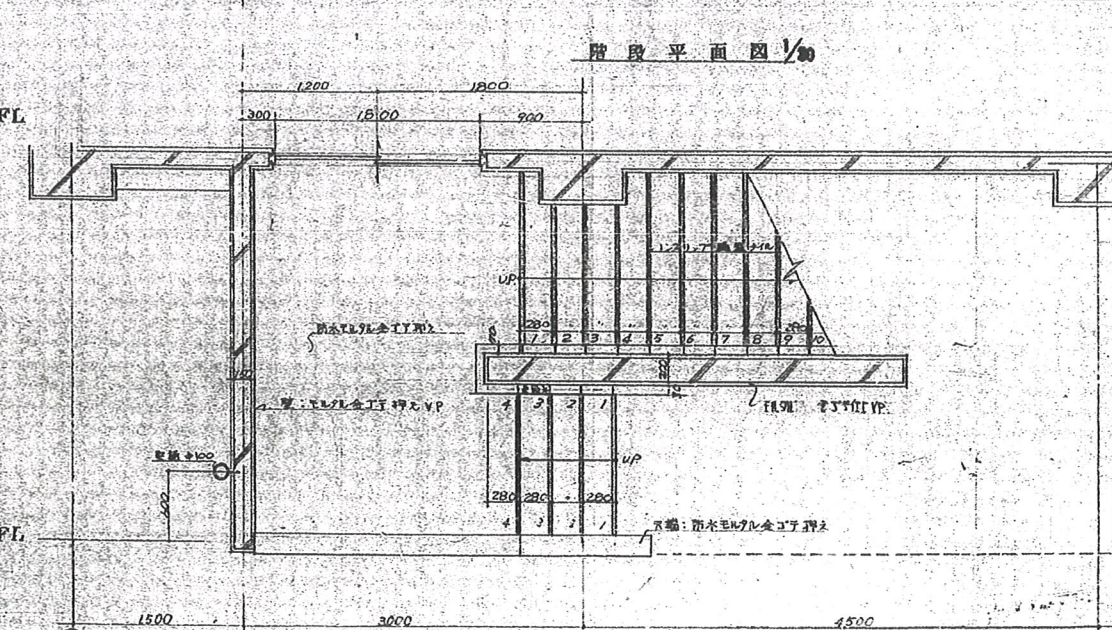
奥側伏図



階段断面図 1/30



階段平面図 1/30



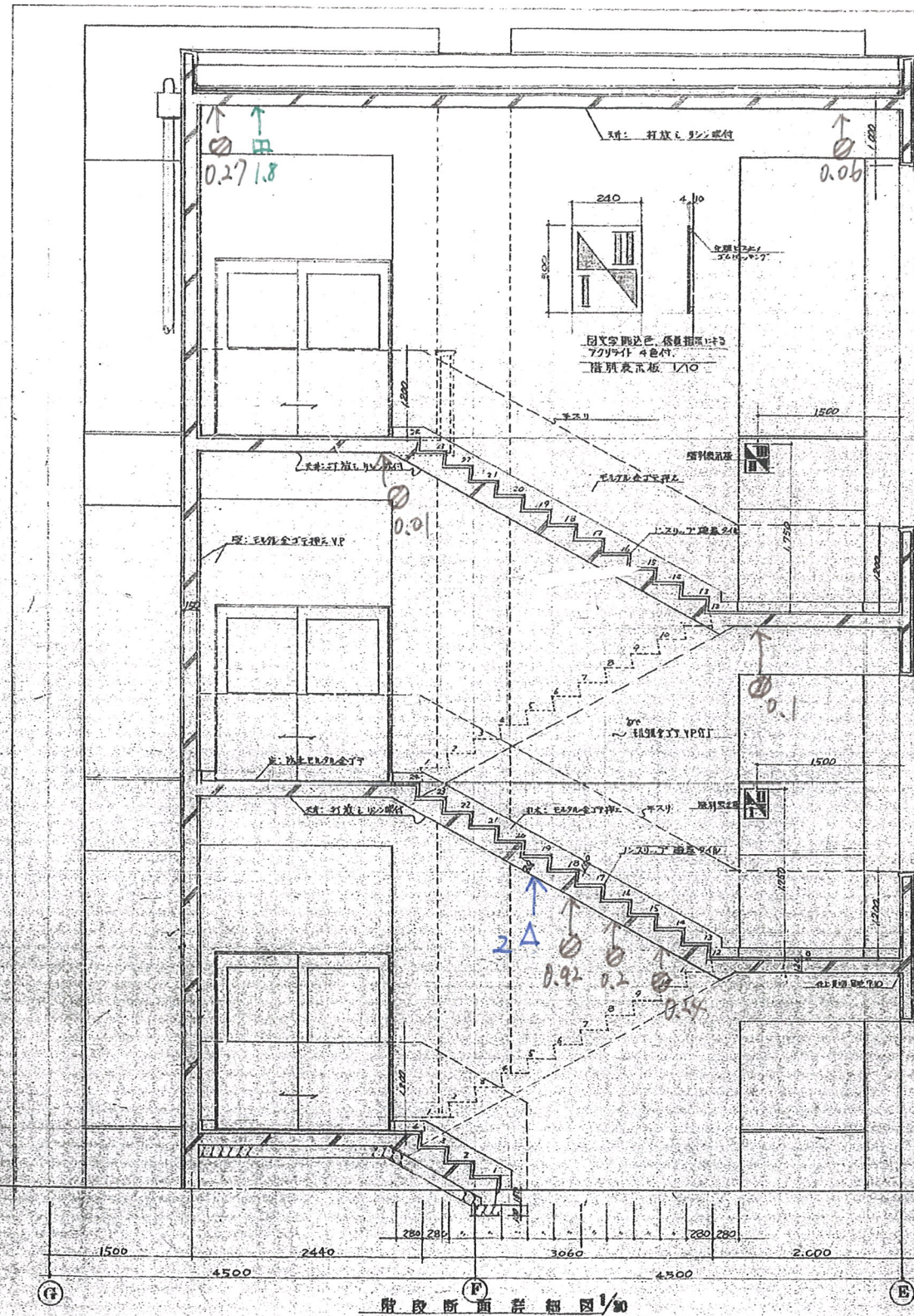
階段平面図 1/30

4417 10

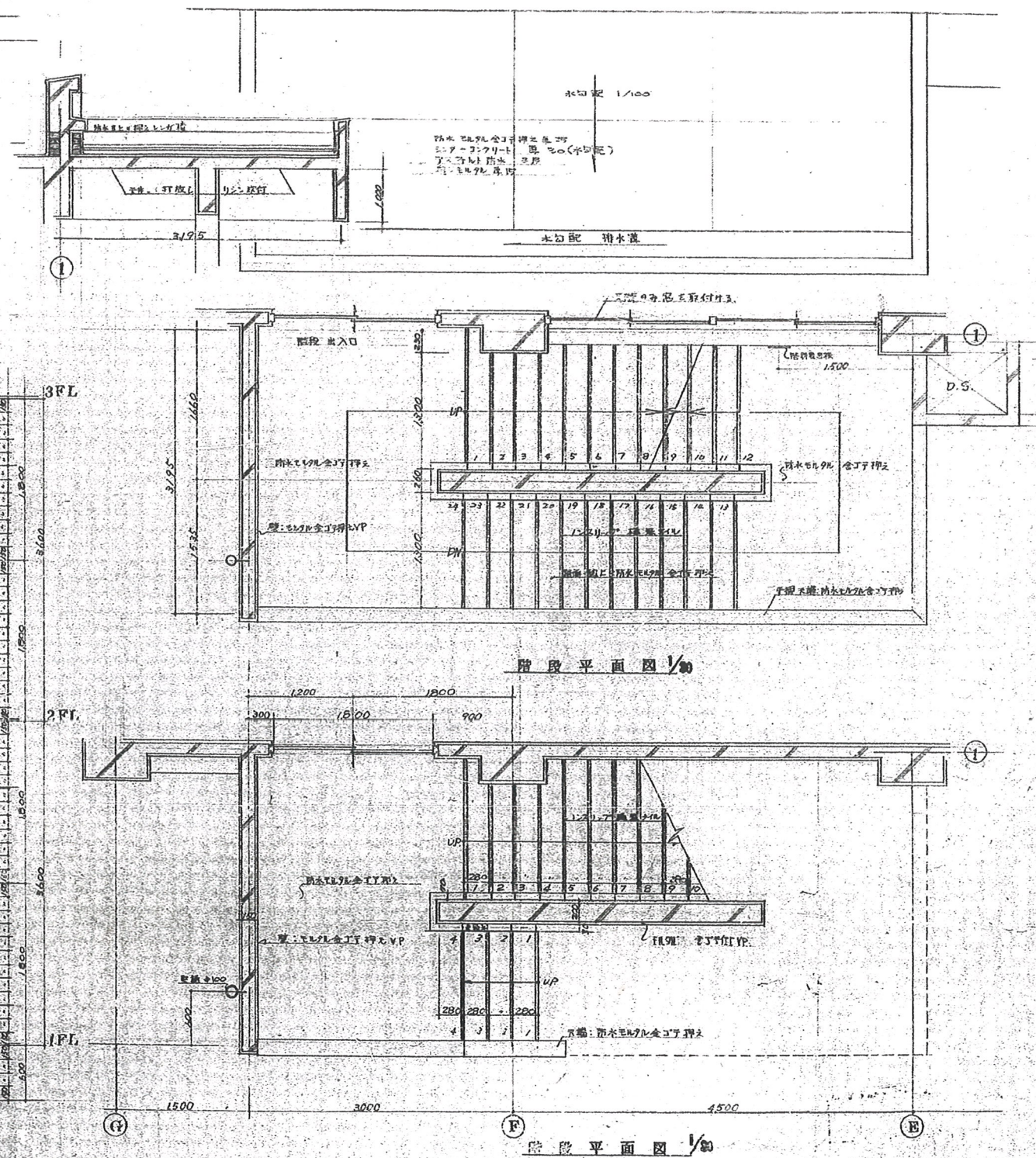
区立水色小学校 建築工事設計図		No. D-00
階段詳細図		縮尺 1/30
設計 年 月 日	訂正 年 月 日	

内 夫 井

~ 0
 △ 2
 △ 0
 # 1.8
 ① 0.9
 ② 0
 ③ 0



外側天井伏図

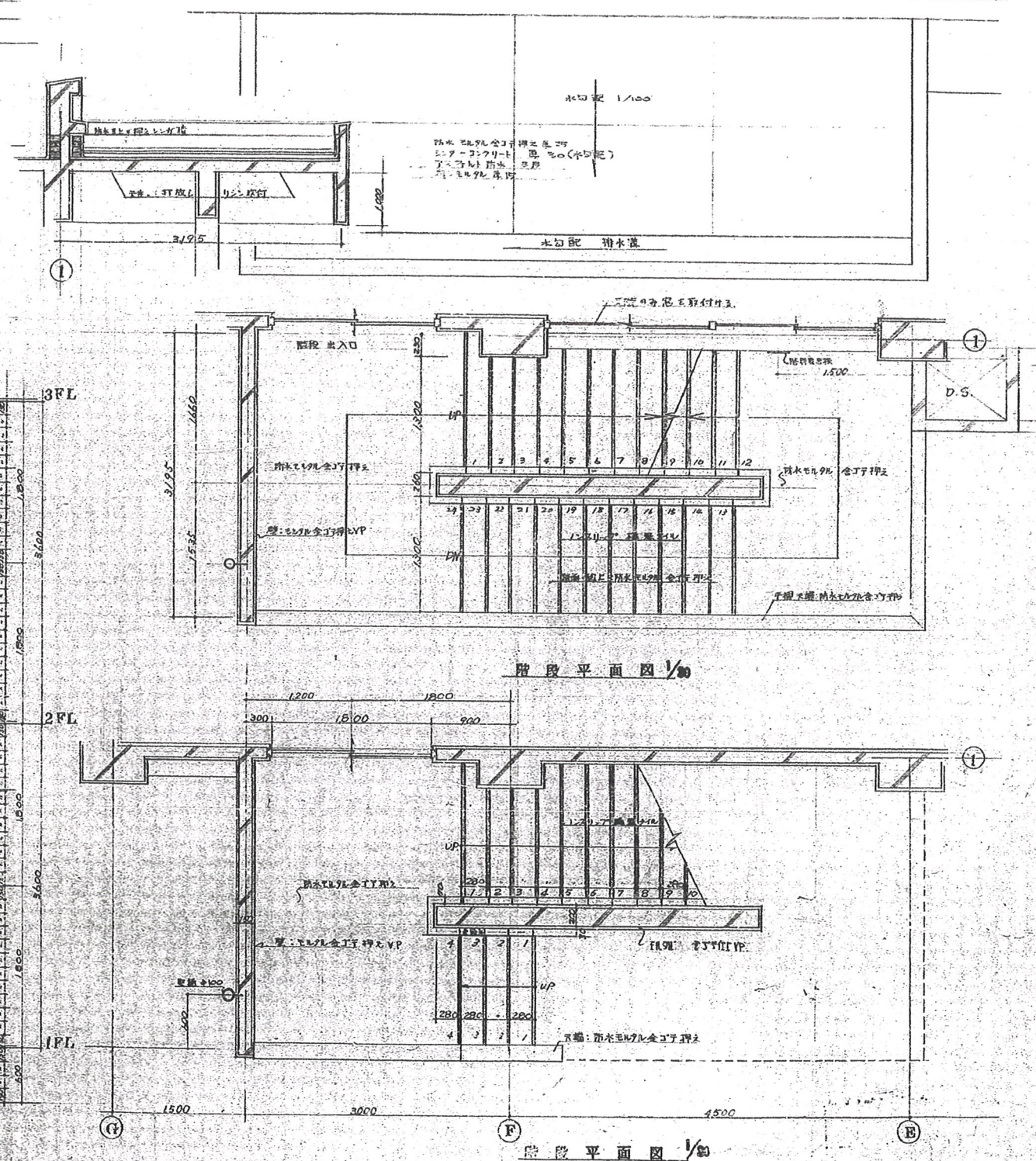


441710

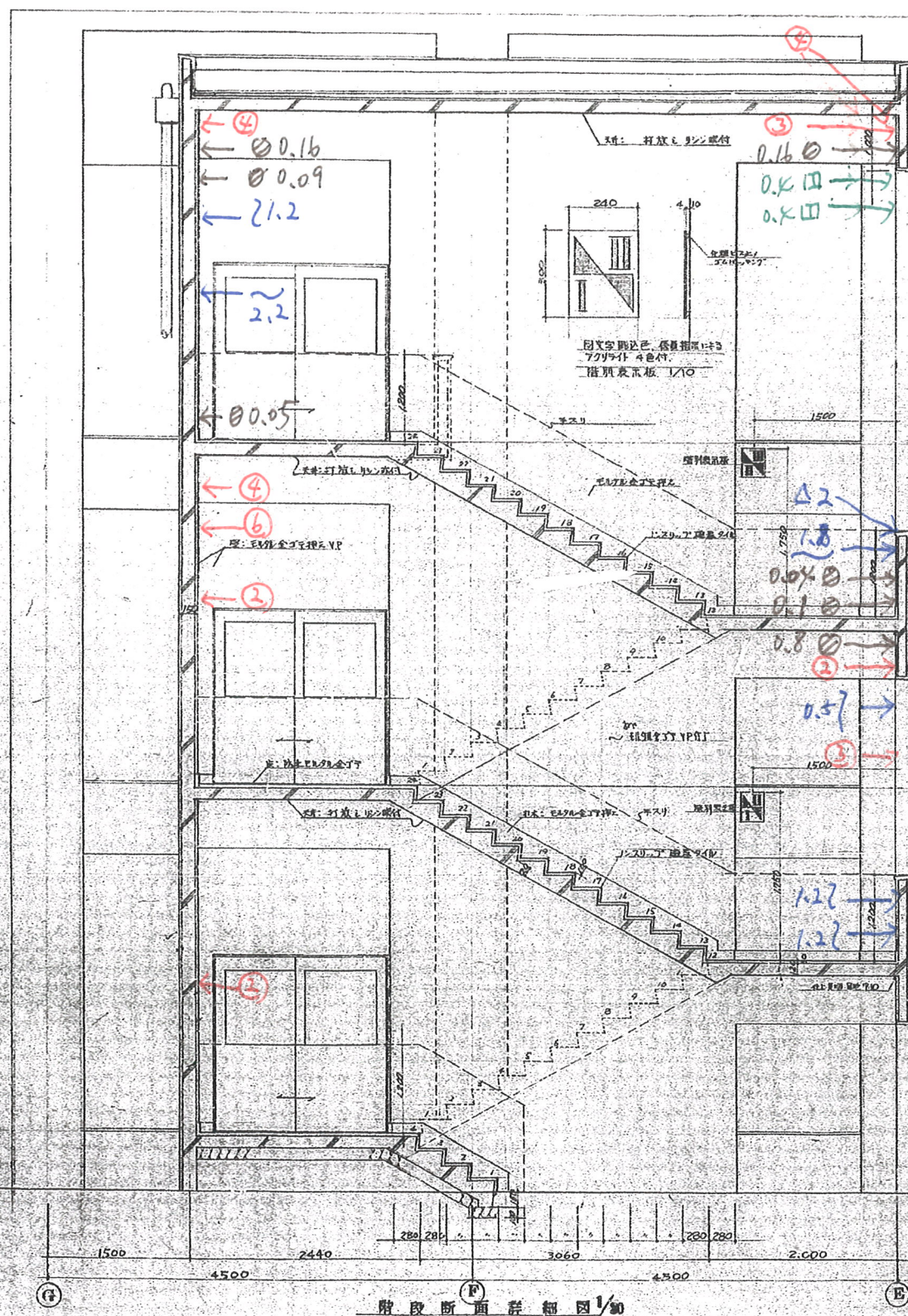
区立水一色小学校 工事設計図 No D 00	
階段断面図	図尺 1/30
設計 年 月 日	訂正 年 月 日

外天井

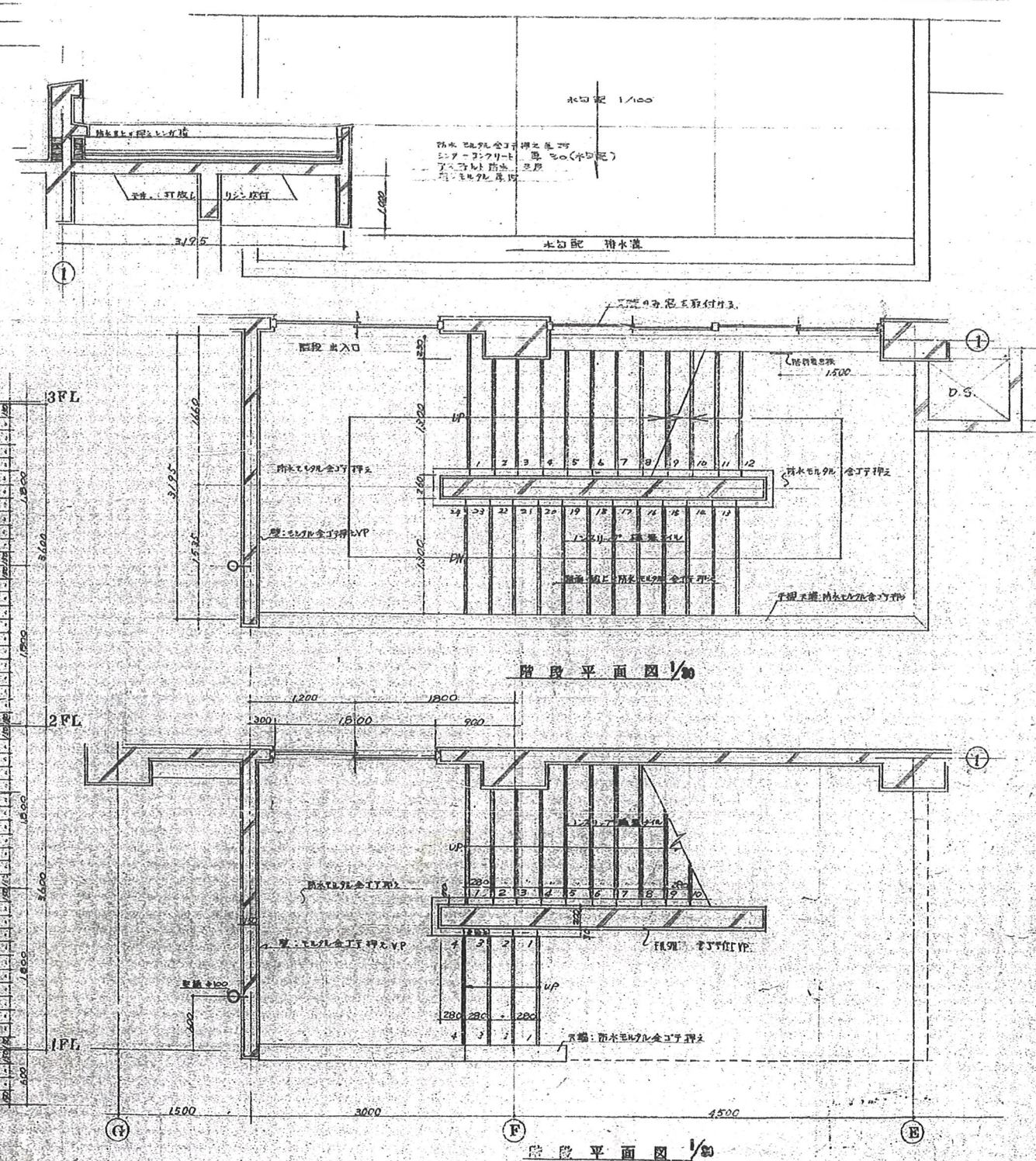
Architectural floor plan of a building section, showing a staircase and various rooms. The plan includes dimensions, elevations, and handwritten notes in Japanese. Key features include a staircase with a width of 1.4m, a room with a width of 1.5m, and a room with a width of 1.0m. The plan also shows a staircase with a width of 1.0m and a room with a width of 1.0m. The plan is labeled with '階段断面図 1/100' at the bottom.



\sim	8.1
Δ	2
\triangle	0
#	0.8
$\textcircled{11}$	1.4
$\textcircled{0}$	30
$\textcircled{\textcircled{0}}$	0



両側側面図



橫壁

低價券号	工部局券号	圖面番号
44	17	10

國立木一色小學校 建築工事設計圖				No. D 09	
階段 詳細圖				圖大 1/30	
				設計	年 月
				訂正	年 月

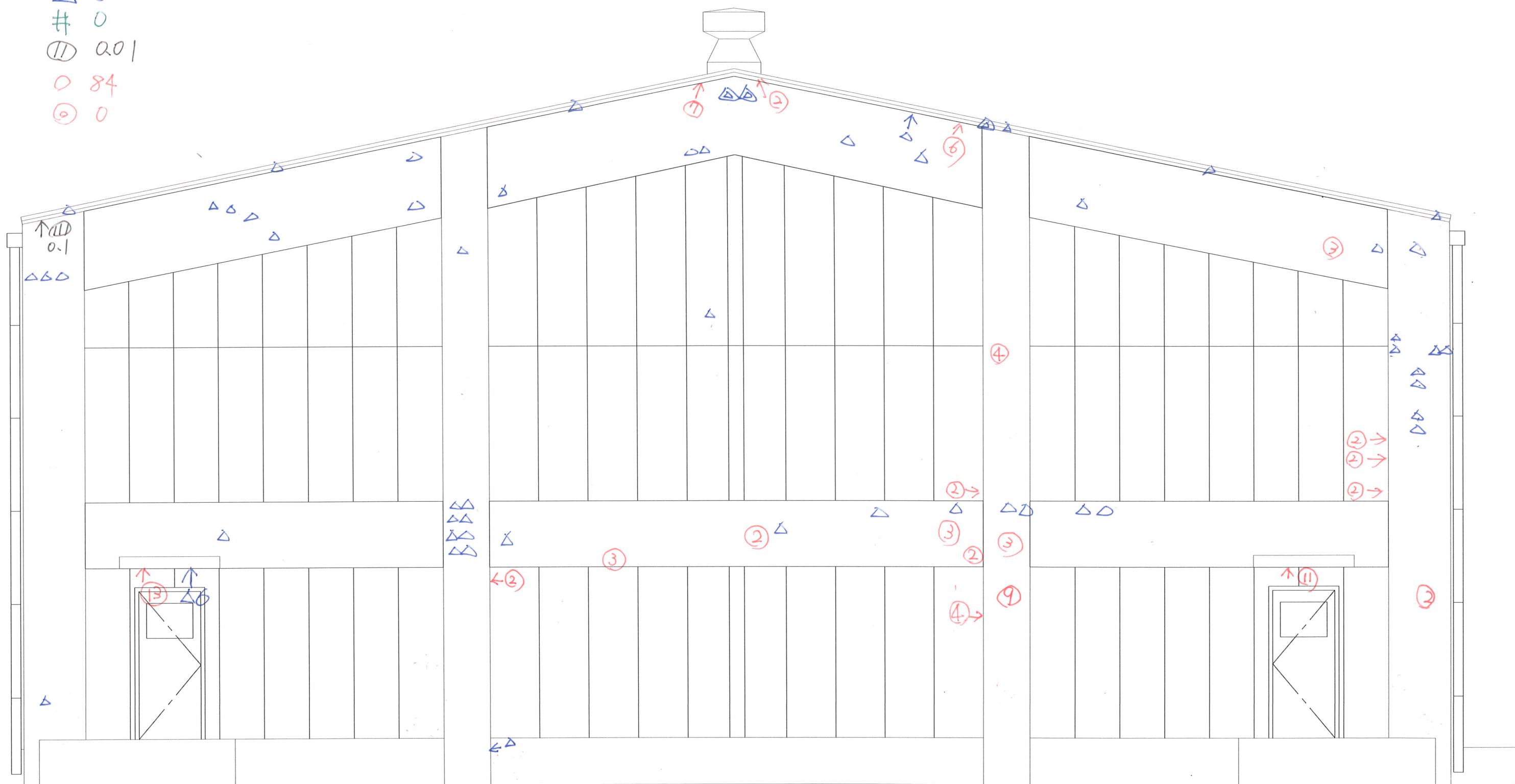
0 15



附段平面图 1/80

區立木一色小學校 建築工事設計圖				NO. D 09
路役詳細圖				縮尺 1/50
				設計 年 月 日
				訂正 年 月 日

~ 0
 △ 59
 ▲ 3
 # 0
 ⑪ 001
 ○ 84
 ⊙ 0

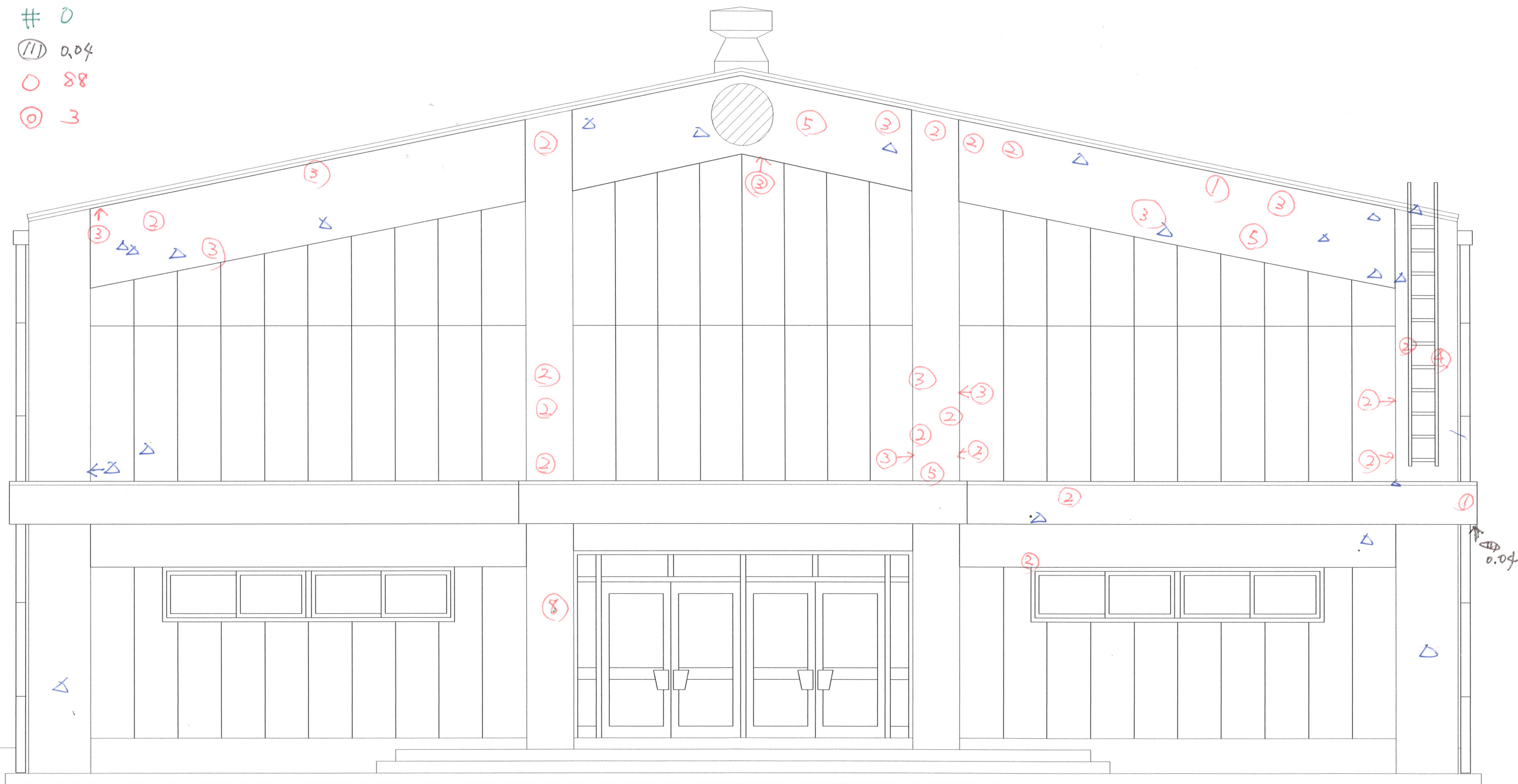


南側立面图

1/100

B棟

~ 0
 △ 21
 △ 0
 # 0
 (11) 0.04
 ○ 88
 ⊙ 3

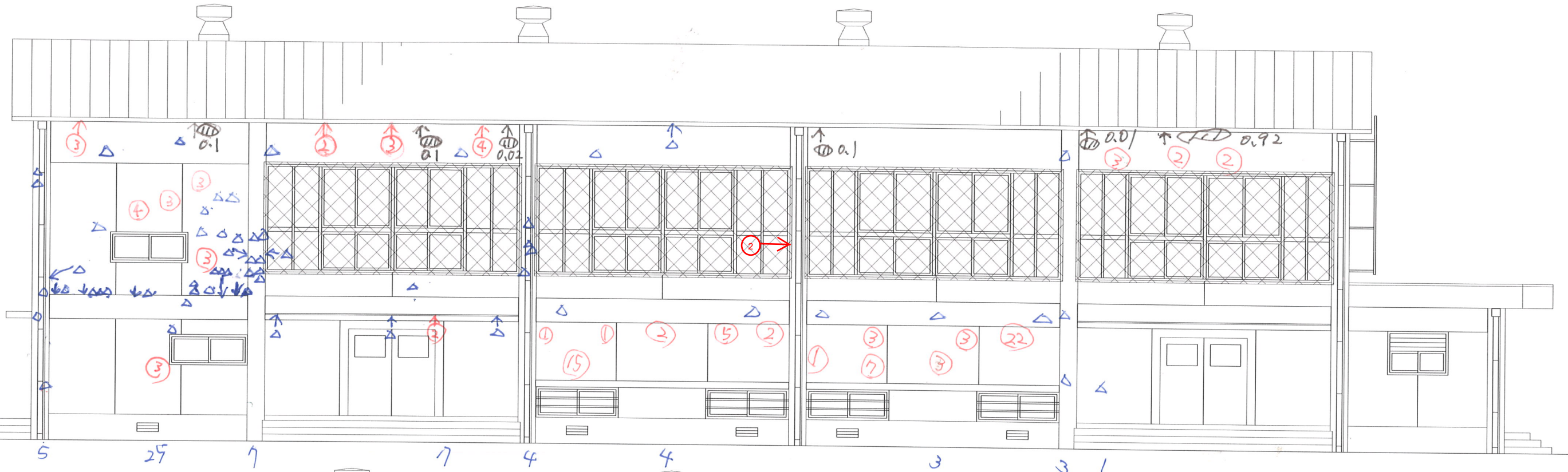


北側立面図

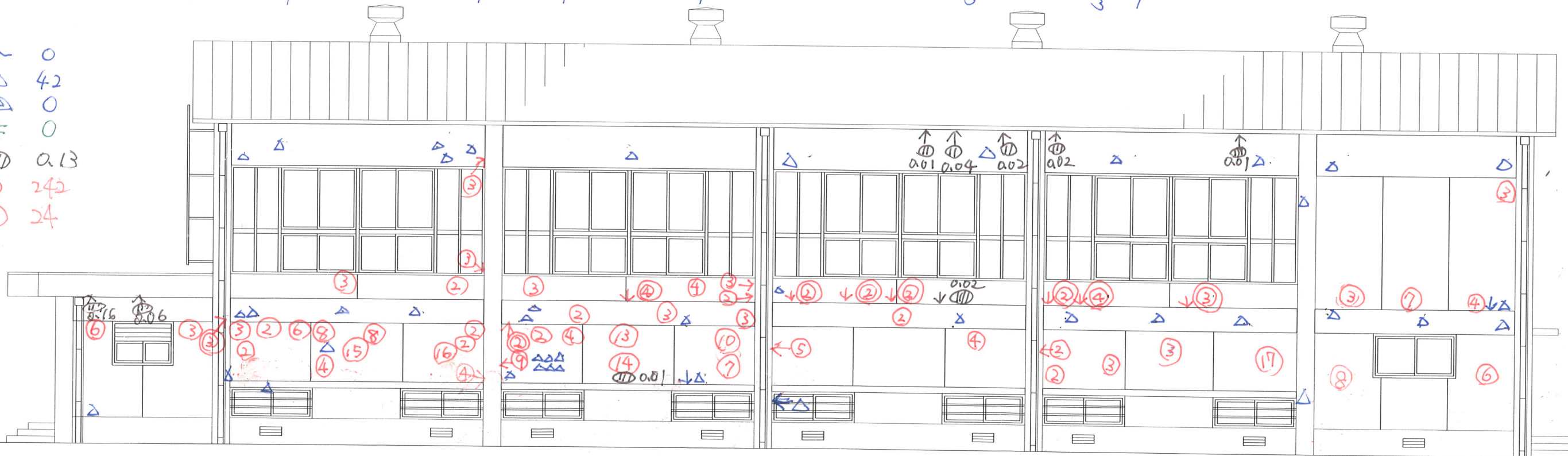
1/100

B棟

~ 0
 △ 59
 ▽ 0
 # 0
 (//) 1.25
 ○ 102
 ⊙ 0



~ 0
 △ 42
 ▽ 0
 # 0
 (//) 0.13
 ○ 242
 ⊙ 24



A hand-drawn floor plan of a long, narrow room, possibly a hallway or a small office. The plan includes several annotations:

- Entrances:** There are two main entrances. The left entrance is marked with a circled '10' and 'a08'. The right entrance is marked with a circled '11' and 'a07'.
- Windows:** The right wall features a series of windows. Some windows are shaded with diagonal lines, indicating they might be closed or have a specific feature. The windows are labeled with circled numbers: '6' and '8'.
- Dimensions:** The width of the room is marked as '0.6' in the center and '0.8' on the right side.
- Other Markings:** There are several blue triangles and lines scattered throughout the plan, possibly indicating furniture placement or structural elements. A circled '12' is also present near the left entrance.

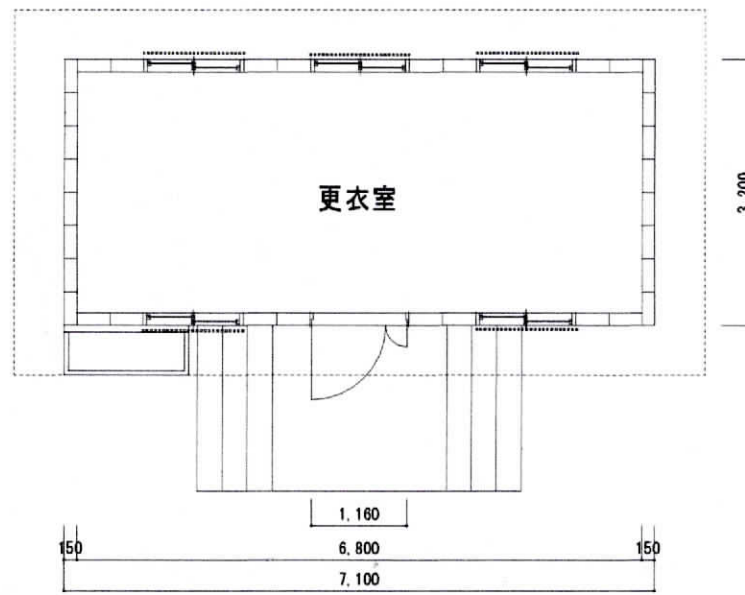
[illegible]

東側立面図 1 / 1 0 0

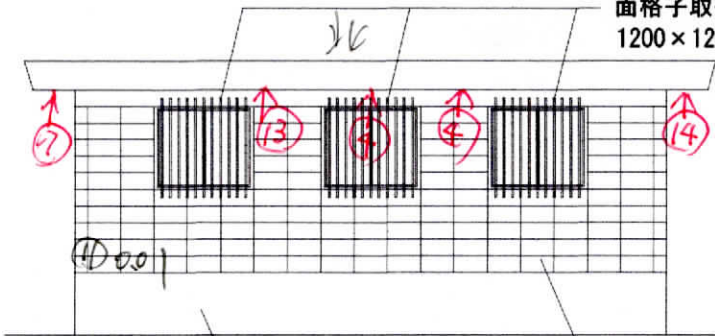
\sim	33.5
\triangle	12
\triangle	0
$\#$	0
$\textcircled{11}$	0
\square	148
$\textcircled{0}$	0



△ 5
⑩ 2.07
Q115

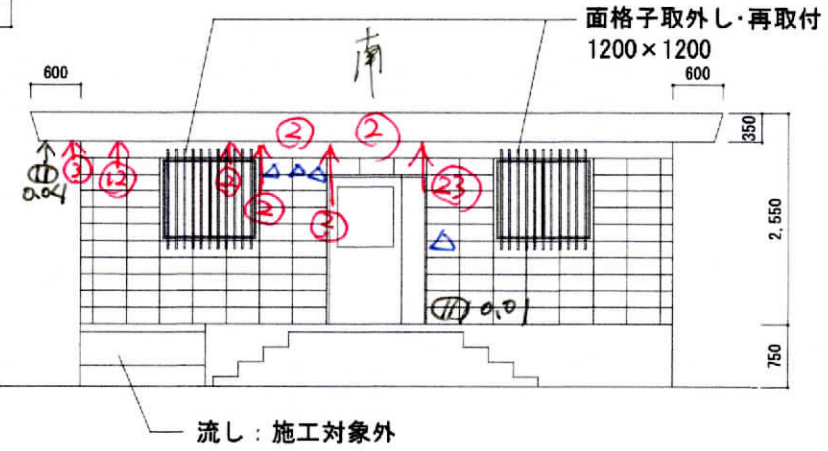
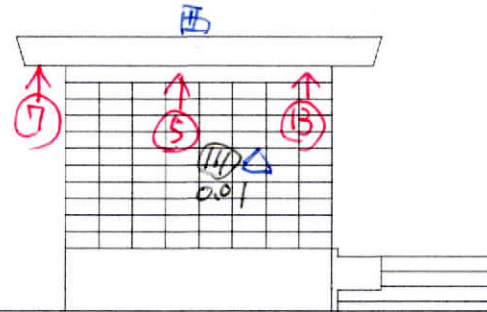


面格子取外し・再取付
1200×1200



巾木：全面施工対象外

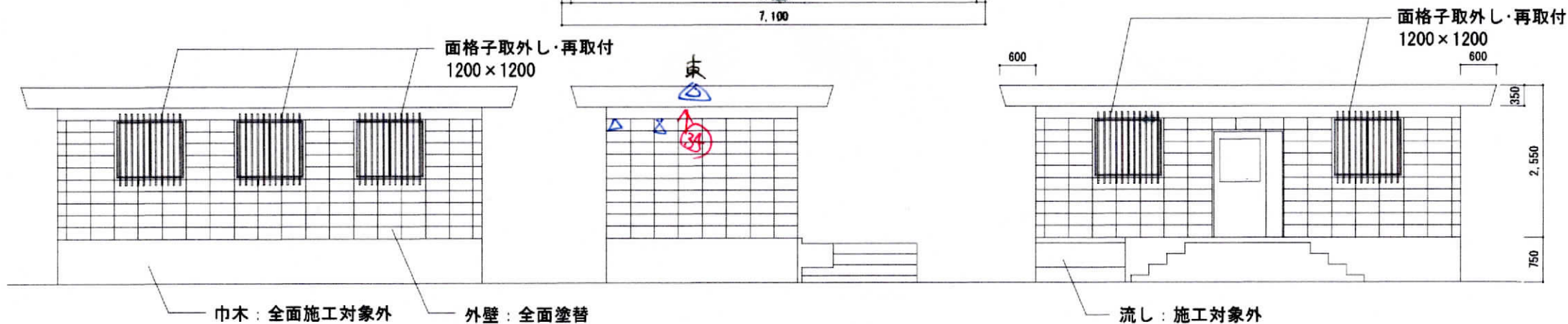
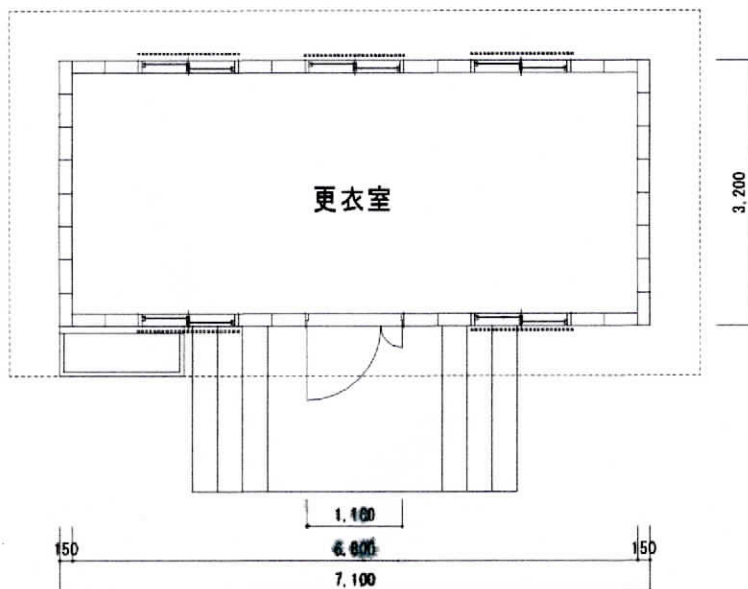
外壁：全面塗替

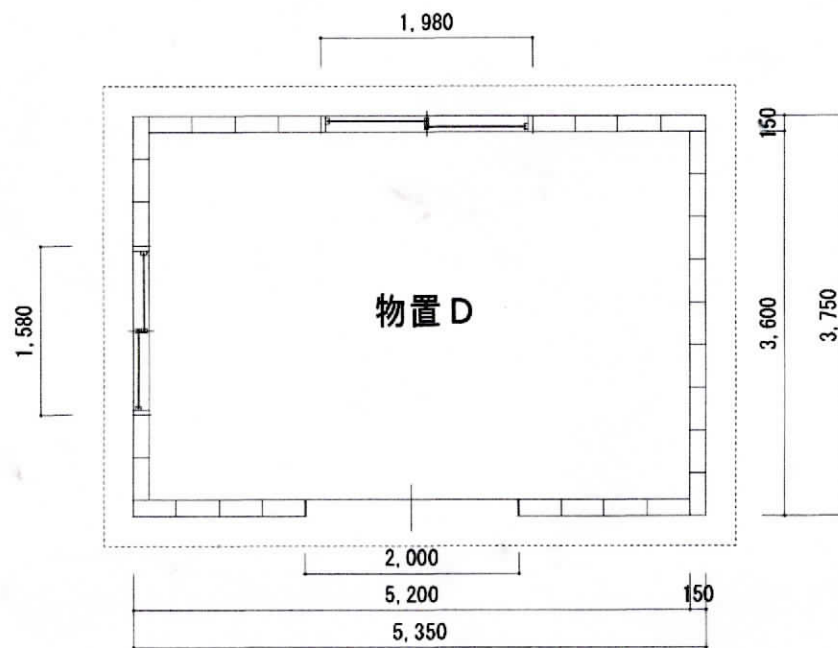
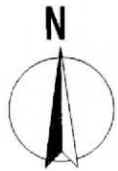


流し：施工対象外

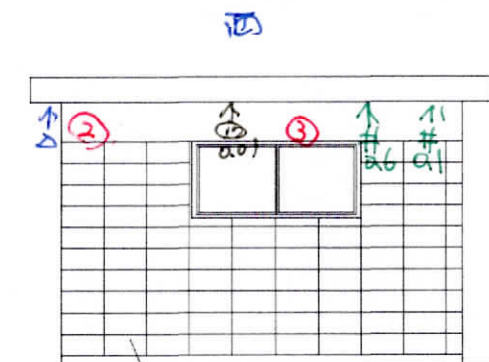


△ 2
△ 1
Q 34

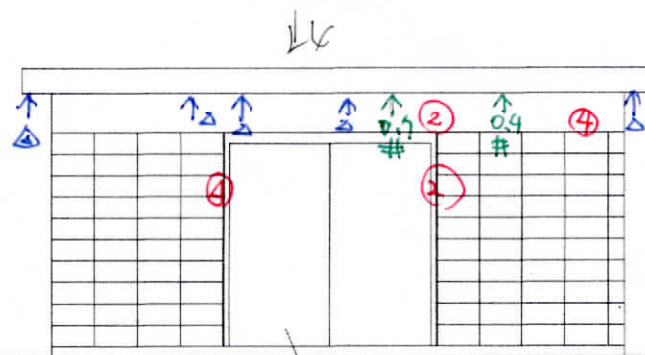




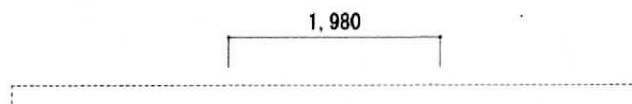
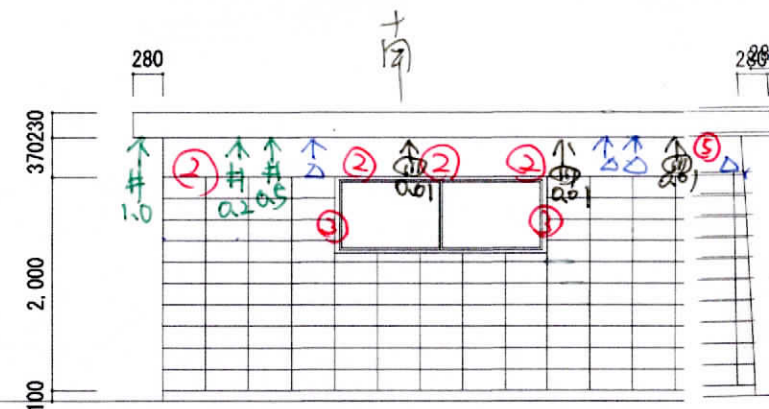
△ 9
 △ 1
 # 3.5
 ⑩ 0.04
 ○ 36



外壁：全面塗替



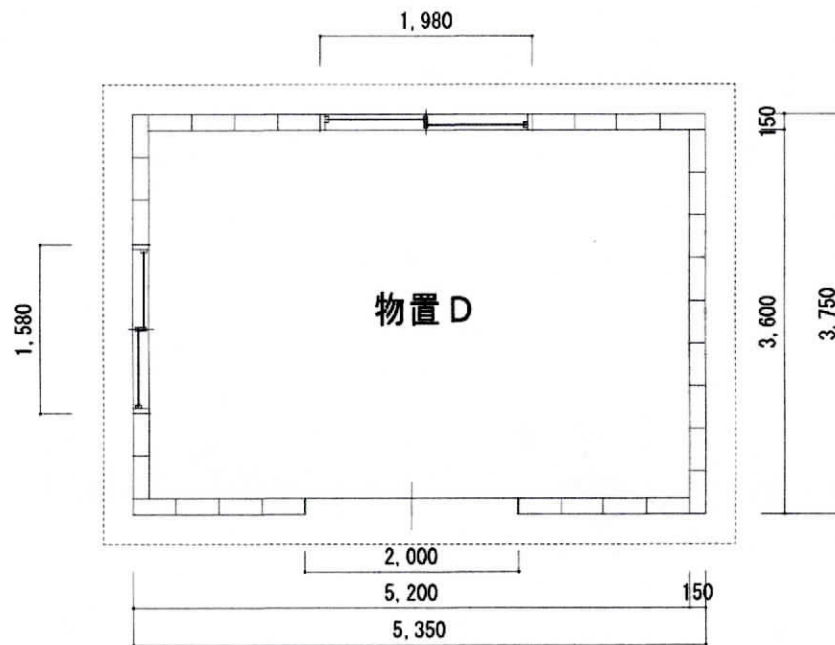
木製建具：塗替（桢共・両面）



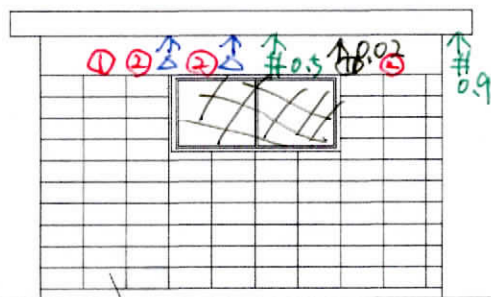
欠損 50x50 Δ2

#1.4

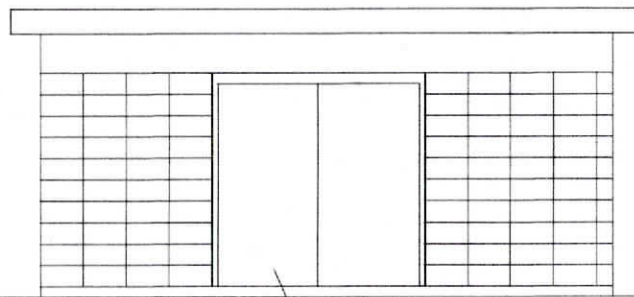
400 0.02



東



外壁：全面塗替



木製建具：塗替（枠共・両面）

